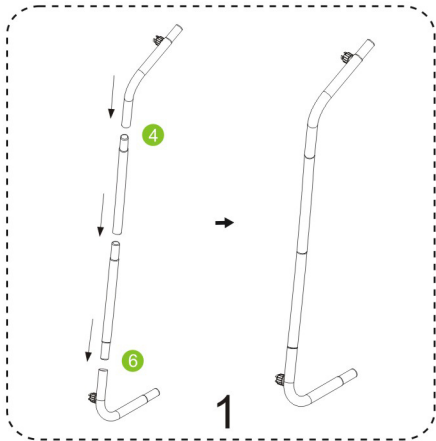
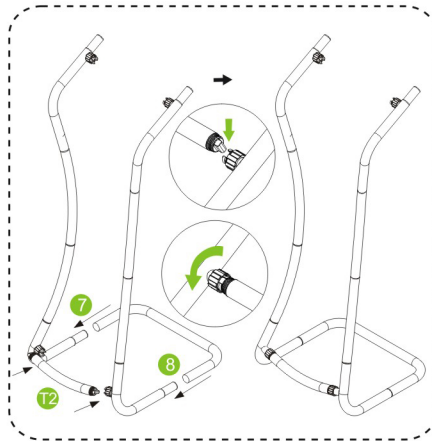


INSTRUCTION

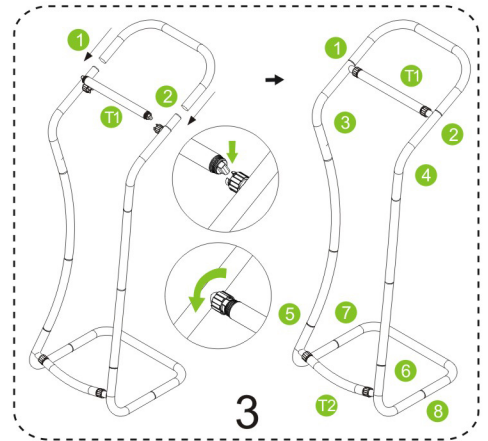
iPad Kiosk stand



Firstly connect the tubes of two sides (left & right)



Then connect the tubes of the bottom and screw T2 tube.

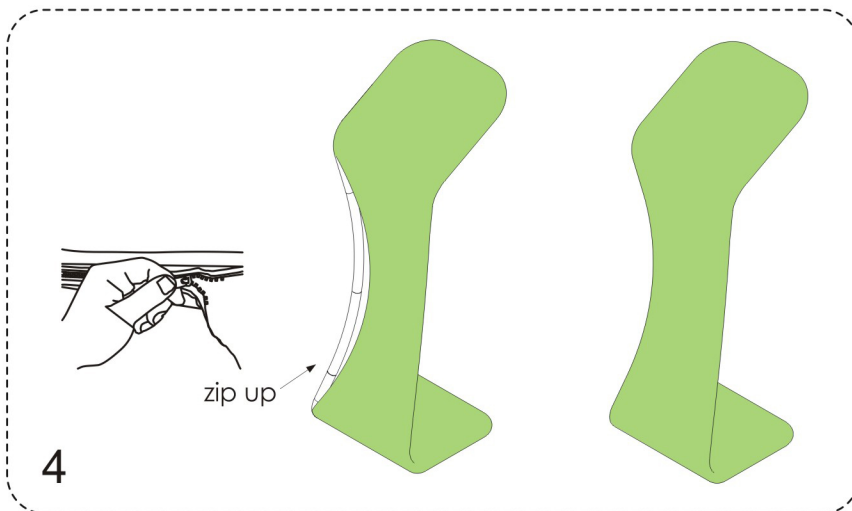


Lastly connect the tubes of the top and screw T1 tube.

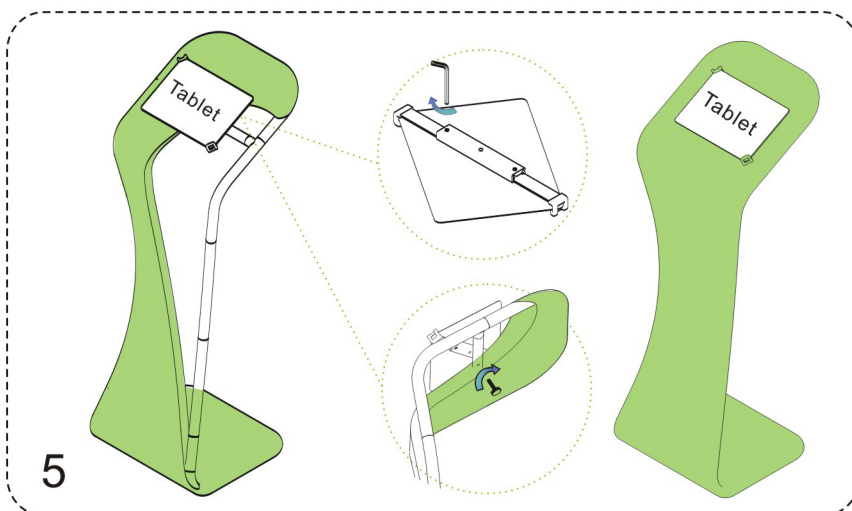


The plastic screwing connector at all corners section
DON'T screw completely but around 90% fastening

Graphic & iPad Setup Instruction



Wrap up the frame with the graphic from one side to the other, then zip up.



Put the iPad holder on the stand and fix with screws, then put the literature holder in place.

